



Eric M. Hersh
Mayor

Daniel J. Stermer
Commissioner

Murray Chermak
Commissioner

Sharon Cheren
Commissioner

Mercedes G. Henriksson
Commissioner

John R. Flint
City Manager

City of Weston

Post Hurricane Wilma 2006 Master Re-Landscaping Plan

June 5, 2006

Monday
June 5, 2006
7:00 P.M.



Weston Community Center
20200 Saddle Club Road
Weston, Florida

Background

During Hurricane Wilma, on October 24, 2005, the City sustained considerable damage to its landscaping.

The City's service provider for landscape architecture services, Calvin Giordano & Associates, has completed a Hurricane Tree Assessment. This assessment evaluates the level and location of the damage done, and proposes a three tiered schedule for use in re-landscaping the City.

Monday
June 5, 2006
7:00 P.M.



Weston Community Center
20200 Saddle Club Road
Weston, Florida

Assessment: Phase I

The first phase of the assessment categorized the damage done into four categories, based upon estimated percentage of damage. The categories are summarized as follows:

Category	Estimated Damage
Category One: No/Minor Damage	0% to 25%
Category Two: Moderate Damage	26% to 50%
Category Three: Severe Damage	51% to 75%
Category Four: Total Replacement	76% to 100%

Monday
June 5, 2006
7:00 P.M.



Weston Community Center
20200 Saddle Club Road
Weston, Florida

Assessment: Phase II

The second phase of the assessment grouped areas of the four categories into three priorities based upon severity of damage, exposure (trips on the adjacent roadway and number and proximity of adjacent homes), damage to the berm, proximity and feasibility of project development, and estimated cost.

Monday
June 5, 2006
7:00 P.M.



Weston Community Center
20200 Saddle Club Road
Weston, Florida

Assessment: Phase II

Two cost estimates for each of the three priorities were provided:

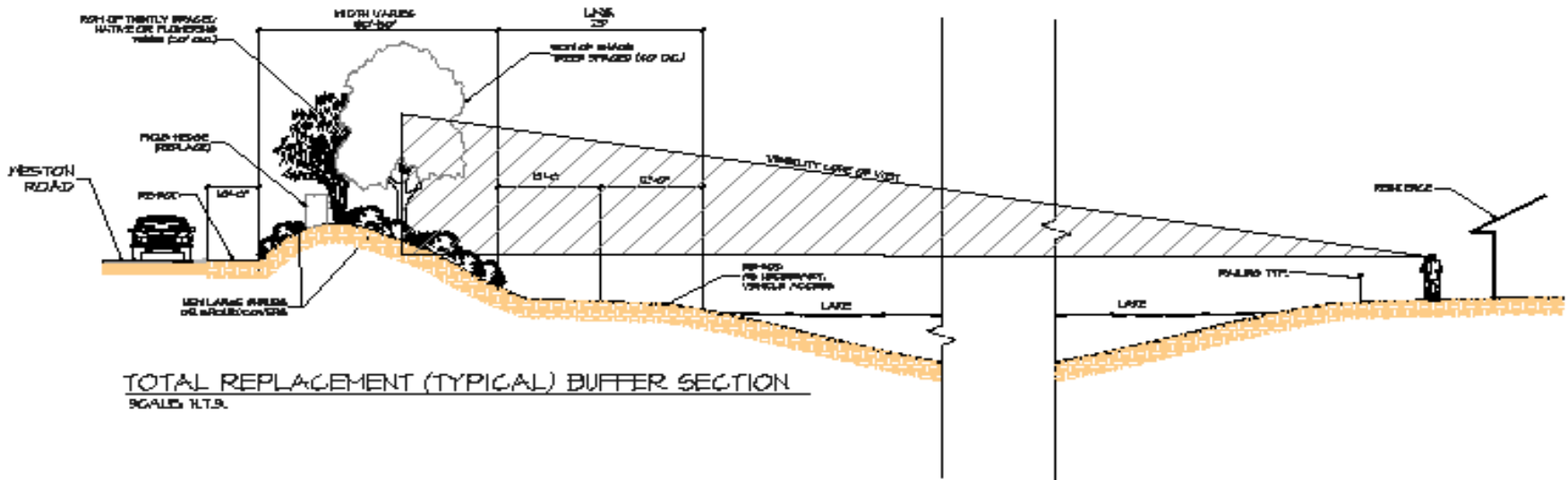
- **“Total Cost Estimate”**: Replacement of berm, hedges, mid-story and large tree canopy, the main screening hedges, accent shrubs, ground cover, grading/filling, sodding and irrigation;
- **“Mid-Story Cost Estimate”**: Replacement of berm, hedges, mid-story trees, the main screening hedge, grading/filling, sodding, and irrigation.

Monday
June 5, 2006
7:00 P.M.



Weston Community Center
20200 Saddle Club Road
Weston, Florida

Total Replacement

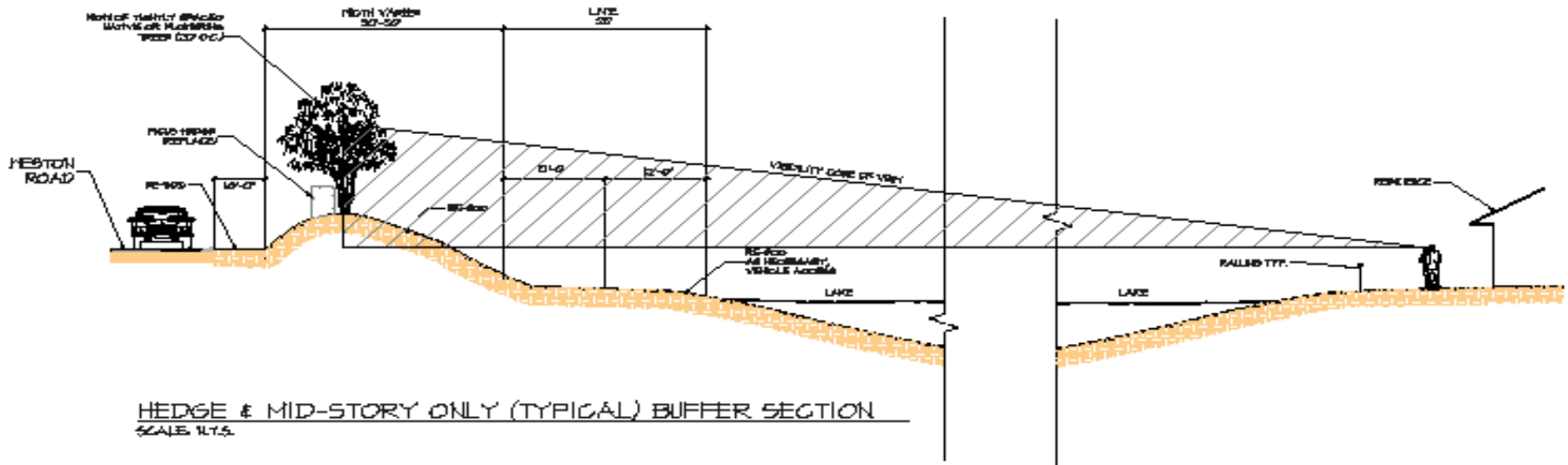




Monday
June 5, 2006
7:00 P.M.

Weston Community Center
20200 Saddle Club Road
Weston, Florida

Mid-Story Replacement



Monday
June 5, 2006
7:00 P.M.



Weston Community Center
20200 Saddle Club Road
Weston, Florida

Priority I, Revised

The first priority would target @ 22,100 lf (4.2 miles) in four areas:

- Weston Road between Royal Palm Boulevard and Indian Trace, west side;
- Indian Trace between Bonaventure Blvd. and Saddle Club Road, north then east sides; Bonaventure Blvd. between Indian Trace and Town Center (east side); and
- South Post Road between Bonaventure Blvd. to “The Ridges” along the north side, and a section on the south side from Emerald Estates Drive west toward “The Ridges”.

The first priority is recommended for implementation in the Fiscal Year 2007 budget.

Priority I, Revised



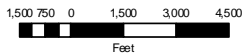
Weston Post Wilma Hurricane Tree Assessment Priority One Map (Total of 9 locations)

Percent Damage

- █ No/Minor (0%-25%)
- █ Moderate (26%-50%)
- █ Severe (51%-75%)
- █ Total (76%-100%)
- - - Total plus Berm Replacement

Note: This map is for distribution only. The information provided on this map needs to be reviewed and verified.

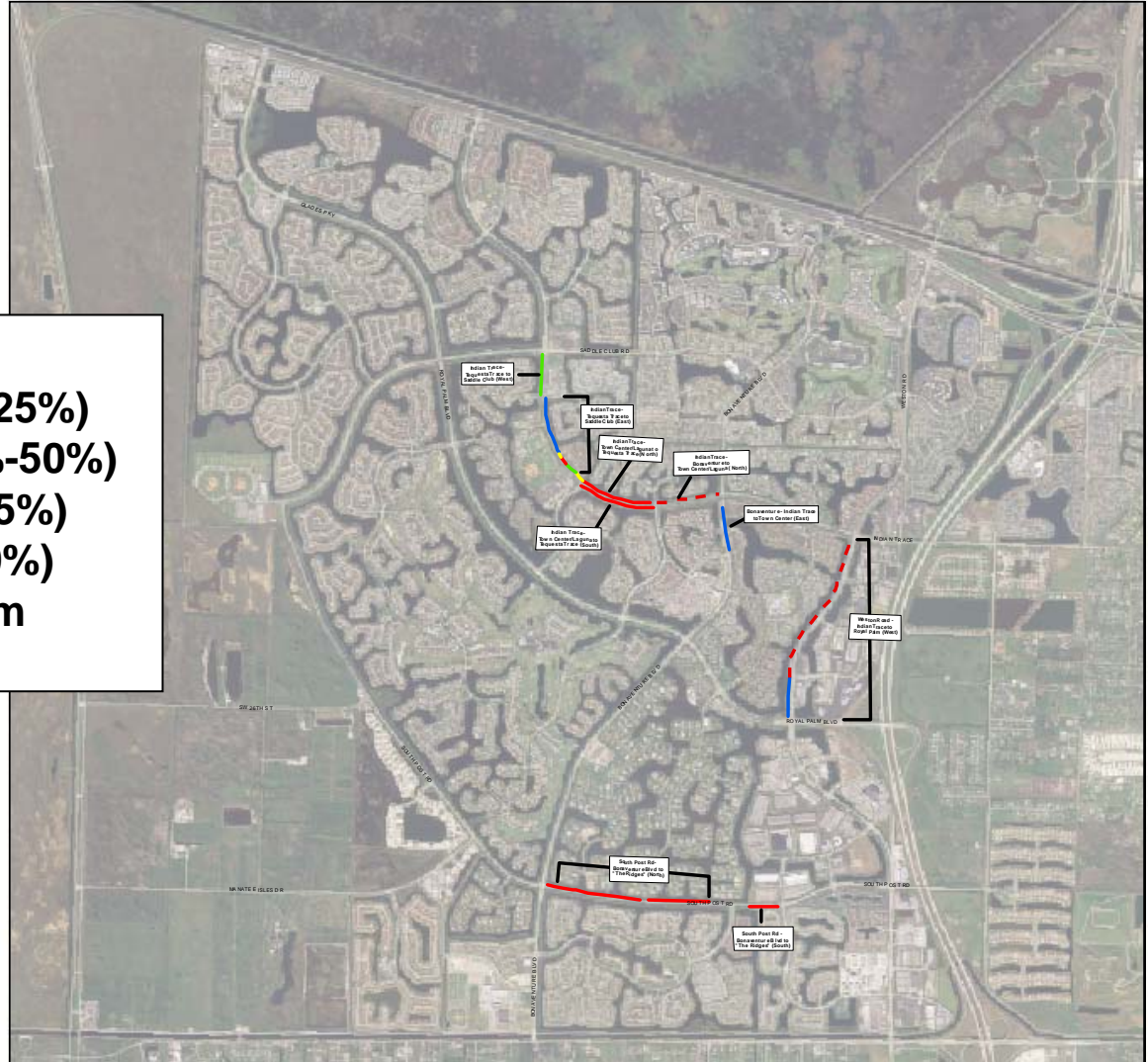
Print Date: 06-07-2006
Map #: WLA-06-100



City of Weston, Inc.
Professional Services



Produced and Maintained by the CGA
Geographical Information Systems Services
for the City of Weston



Monday
June 5, 2006
7:00 P.M.



Weston Community Center
20200 Saddle Club Road
Weston, Florida

Priority I, Revised

Estimated Cost for “**Total Replacement**” of Priority I Project:

Construction:	\$4,261,950
Design, Demolition, CEI:	426,195
Contingency:	<u>426,195</u>
Total:	\$5,114,340

(Recommended for first year of program)

Estimated Cost for “**Mid-Story Replacement**” of Priority I Project:

Construction:	\$1,854,157
Design, Demolition, CEI:	185,416
Contingency:	<u>185,416</u>
Total:	\$2,224,988

Monday
June 5, 2006
7:00 P.M.



Weston Community Center
20200 Saddle Club Road
Weston, Florida

Priority II, Revised

The second priority would target @ 30,650 lf (5.8 miles) in five areas:

- ❧ Glades Parkway between Saddle Club Road and Savannah, west side, with another stretch from Glades Circle to Gator Run, west side;
- ❧ Saddle Club Road between Royal Palm Boulevard and South Post Road, north and south sides;
- ❧ Those portions of Country Isles and Three Village with moderate or greater damage, within the area bordered by Indian Trace, Weston Road, Royal Palm Blvd., and Bonaventure Blvd.; and
- ❧ SR84 from Indian Trace west to Canal.

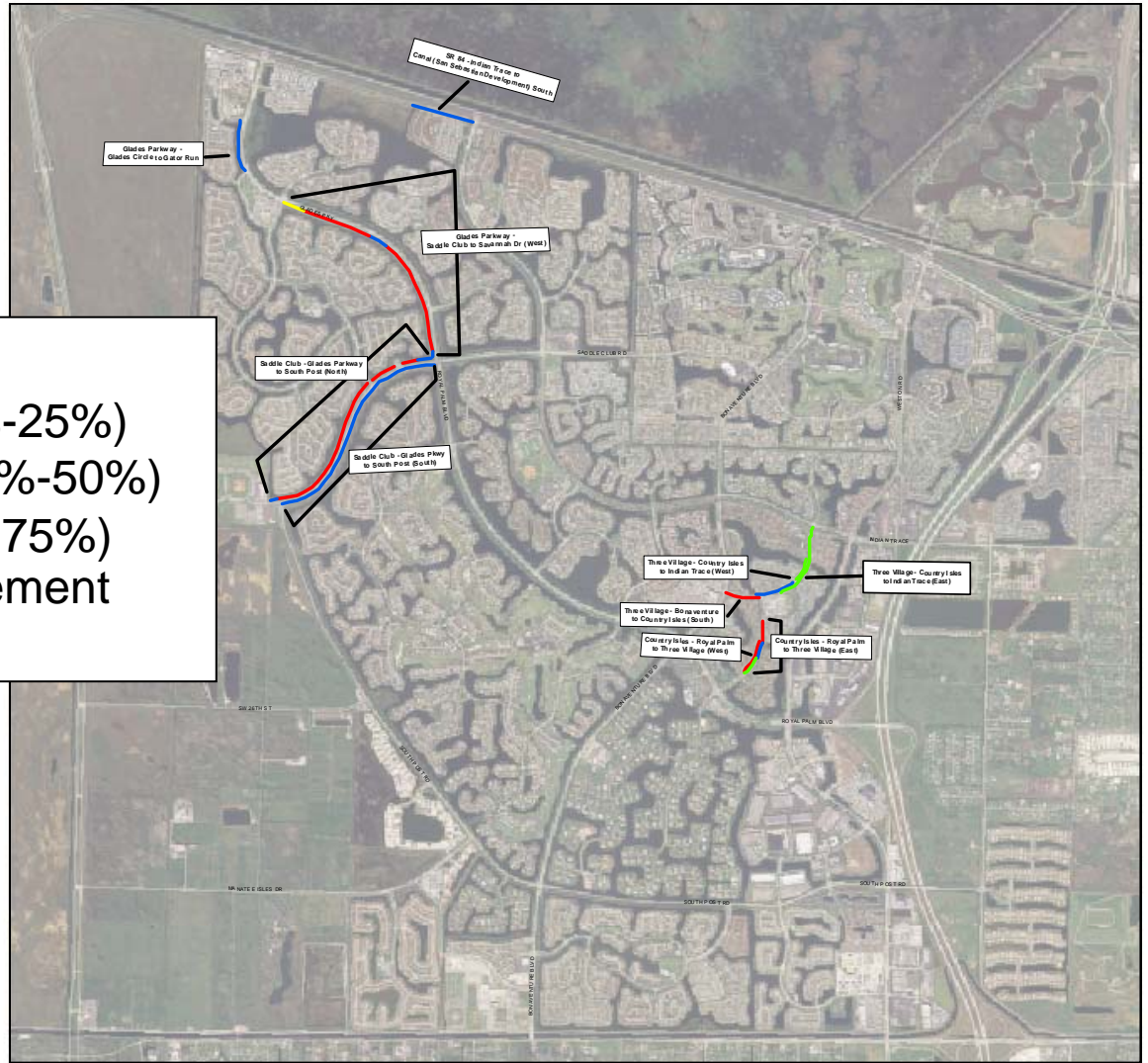
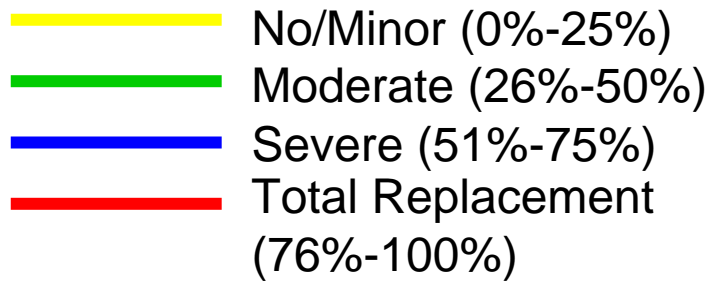
The second priority is recommended for implementation in the Fiscal Year 2008 budget.

Priority II, Revised



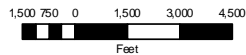
Weston Post Wilma Hurricane Tree Assessment Priority Two Map (Total of 10 locations)

Percent Damage



Note: This map is for draft purposes only. The information provided on this map needs to be reviewed and revised.

Print Date: 06-07-2006
Map #: WLA-06-101



City of Weston GIS Services, Inc.



Produced and Maintained by the CGA
Geographical Information Systems Services
for the City of Weston.

Monday
June 5, 2006
7:00 P.M.



Weston Community Center
20200 Saddle Club Road
Weston, Florida

Priority II, Revised

Estimated Cost for “**Total Replacement**” of Priority II Project:

Construction:	\$4,446,440
Design, Demolition, CEI:	444,604
Contingency:	<u>444,604</u>
Total:	\$5,335,248

(Recommended for second year of program)

Estimated Cost for “**Mid-Story Replacement**” of Priority II Project:

Construction:	\$1,482,013
Design, Demolition, CEI:	148,201
Contingency:	<u>148,201</u>
Total:	\$1,778,416

Monday
June 5, 2006
7:00 P.M.



Weston Community Center
20200 Saddle Club Road
Weston, Florida

Priority III

The third priority would complete the remainder of the City:

- Approximately 63,000 If (13 miles) of areas designated as moderate to total damage;
- Approximately 196,500 If (37 miles) of areas designated as no to minor damage.

The third priority is recommended for implementation in the Fiscal Year 2009 budget.

Priority III



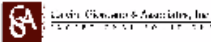
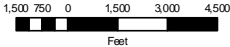
Weston Post Wilma Hurricane Tree Assessment Priority Three Map

Percent Damage

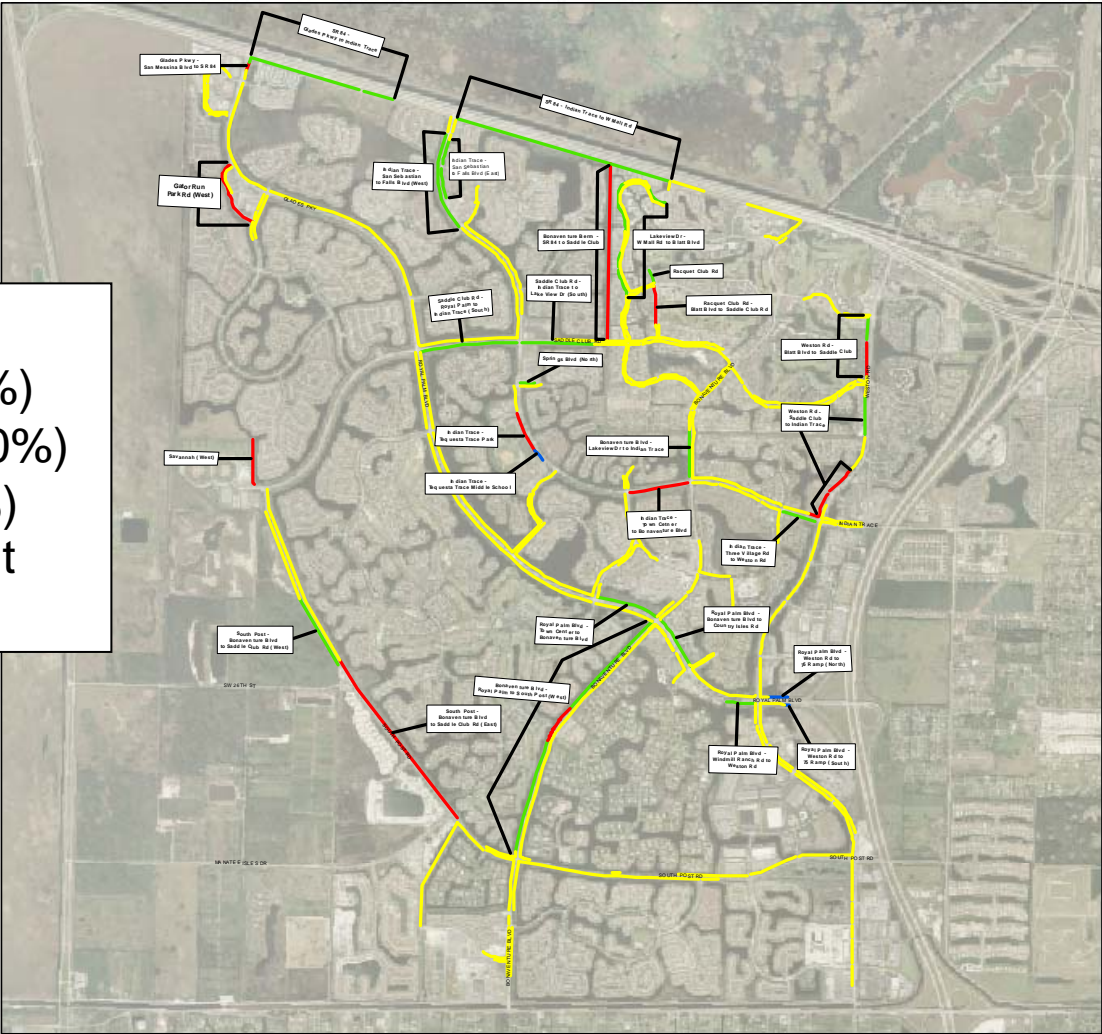
- No/Minor (0%-25%)
- Moderate (26%-50%)
- Severe (51%-75%)
- Total Replacement (76%-100%)

Note: This map is for display use only. The information provided on this map needs to be reviewed and verified.

Print Date: 05-24-2006
Map #: WLA-06-102



Produced and Maintained by the CGA
Geographical Information Systems Services
for the City of Weston



Monday
June 5, 2006
7:00 P.M.



Weston Community Center
20200 Saddle Club Road
Weston, Florida

Estimated Cost for “**Total Replacement**” of Priority III Project:

Construction:	\$7,731,145
Design, Demolition, CEI:	773,115
Contingency:	<u>773,114</u>
Total:	\$9,277,374

(Recommended for third year of program)

Estimated Cost for “**Mid-Story Replacement**” of Priority III Project:

Construction:	\$3,243,715
Design, Demolition, CEI:	324,372
Contingency:	<u>324,371</u>
Total:	\$3,892,458

Monday
June 5, 2006
7:00 P.M.



Weston Community Center
20200 Saddle Club Road
Weston, Florida

Summary, Revised

- The Proposed Re-Landscaping Plan would span a three year period and would focus on the more damaged areas of the City in the first two years, using the criteria referenced earlier.
- Funding sources will be addressed during the budget process.
- The Plan would re-landscape at the “**Mid-Story**” level.

Monday
June 5, 2006
7:00 P.M.



Weston Community Center
20200 Saddle Club Road
Weston, Florida

Summary, Revised

Estimated costs for the Plan are:

Priority I:	\$2,224,988
Priority II:	1,778,416
Priority III:	<u>3,892,458</u>
Total:	\$7,895,862



Eric M. Hersh
Mayor

Daniel J. Stermer
Commissioner

Murray Chermak
Commissioner

Sharon Cheren
Commissioner

Mercedes G. Henriksson
Commissioner

John R. Flint
City Manager

City of Weston

Post Hurricane Wilma 2006 Master Re-Landscaping Plan

June 5, 2006